

Revision Date: 1/24/2025

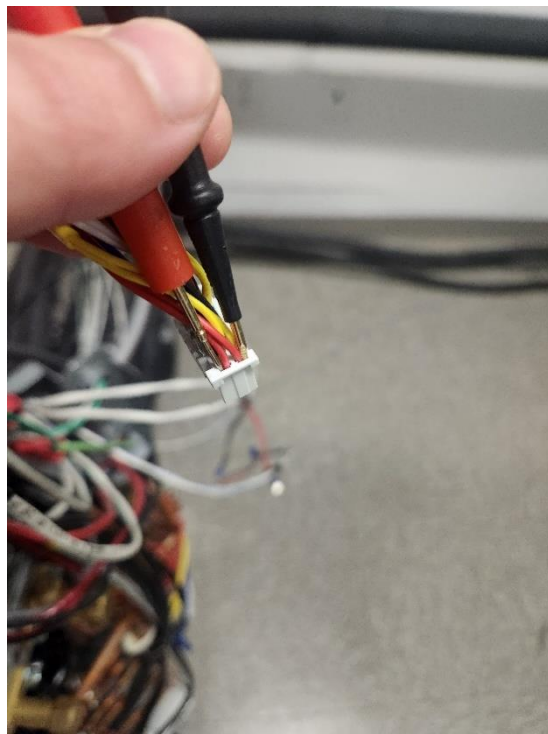
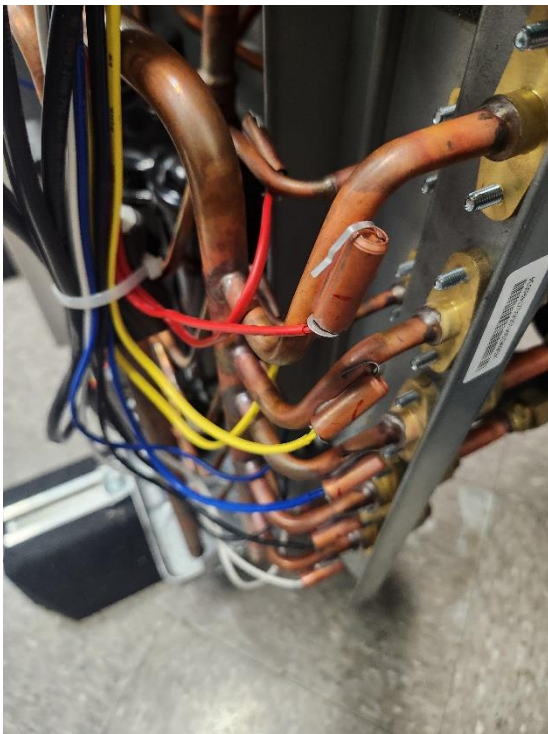
Subject: E401 Error Code

Models: FJM

Title: Outdoor Freezing Detection

Troubleshooting Steps:

1. Ensure EVA thermistors are installed correctly on each copper line jacket and plugged in properly on PCB.
2. Power off unit for a minimum of 15-20 minutes before continuing to next step.
3. Remove thermistor harness, Ohm the sensor and compare it to the resistance chart on page 2.
4. Replace thermistor harness if reading incorrectly.
5. If thermistors are reading correctly, check refrigerant levels.
6. If refrigerant levels are accurate, replace PCB.



See the Video showing this troubleshooting technique. Click the icon below:



T (°C)	T (°F)	Rmin(kΩ)	Rcent(kΩ)	Rmax(kΩ)
-1	30	27.33	28.47	29.63
0	32	26.18	27.27	28.37
2	36	24.06	25.03	26.02
3	37	23.07	24.00	24.93
5	41	21.23	22.06	22.90
7	45	19.55	20.30	21.06
9	48	18.03	18.70	19.38
10	50	17.31	17.95	18.60
11	52	16.63	17.24	17.86
14	57	14.77	15.29	15.81
15	59	14.20	14.69	15.19
17	63	13.13	13.58	14.03
19	66	12.16	12.57	12.97
21	70	11.27	11.64	12.00
22	72	10.85	11.20	11.55
25	77	9.700	10.00	10.30
26	79	9.341	9.633	9.926
27	81	8.997	9.282	9.568
30	86	8.049	8.313	8.578
31	88	7.758	8.016	8.275
33	91	7.213	7.458	7.704
34	93	6.957	7.196	7.436
37	99	6.249	6.470	6.694
38	100	6.032	6.247	6.465